



# Rochester 2120

## October 2019



### Lodge Officers

#### **Exalted Ruler**

Steve Politz

#### **Leading Knight**

Paula Garcia

#### **Loyal Knight**

Jayne Smiley

#### **Lecturing Knight**

Greg Bauer

#### **Treasurer**

Jan Sawyer- Fill

In

#### **Secretary**

Sandy Eck

#### **Chaplain**

Connie Walters

#### **Esquire**

Jim Scott

#### **Tiler**

Linda Scott

#### **Inner Guard**

Dawn Ziemek

#### **Trustees**

Gwen Herrick

Greg Glass

Robert Hudkins

Mark Smiley

Jim Walters

### PRO SHOP

#### HOURS

**Weekdays: 9AM-6PM**

**Weekends: 8AM-Close**



### MESSAGE FROM THE EXALTED RULER

Fall is upon us! The leaves will soon be coloring the trees as we move into the new season. We will still have some beautiful days for golfing at the Elks. The hours at the Pro Shop will be limited so please try to remember to bring cash for the honor box. The trustees would like to hear about any activities you may want to see and support at the Lodge this Fall. We would also like to get some new volunteers for board positions and activities. If interested please contact me or text me at 812-208-3842 or contact any current board member or officer. We can always make things better if we all participate. Thank you again for supporting your Elks!



**Steve Politz,  
Exalted Ruler**



### Lodge Hours

#### MONDAY **CLOSED**

3<sup>RD</sup> Monday  
Lodge Meeting  
7:00 PM

TUESDAY  
Open 3 PM- Close

WEDNESDAY  
Open 3 PM- Close

THURSDAY  
Open 3 PM- Close  
4<sup>th</sup> Thursday of the  
Month is \$1,000  
Drawing

FRIDAY  
Lodge Open 12 PM  
to Close  
Dining Open 5:30  
to 9:00 PM

SATURDAY  
Lodge Open 12 PM  
to Close

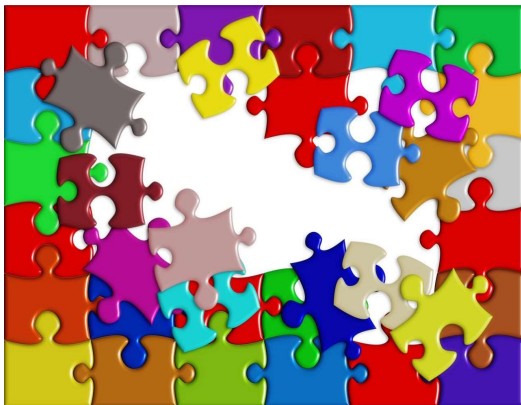
SUNDAY  
Lodge Open 12 PM  
to Close



The Elks Lodge 2120 will be **CLOSED**  
starting November 1<sup>st</sup>, 2019 until April  
1<sup>st</sup>, 2020.



Thank you again to our Volunteers. Without each and every one of you piecing together our association, we would not be where we are today. The Elks, like a puzzle, is always looking for all those pieces to complete our Mission.



The golf season is not over yet  
The weather-well who knows about the weather- but it could be nice for weeks.  
The pro shop will be open through October or pay at the bar or use the honor box. Don't put those clubs away yet.



### Communication is Key!



There are several ways to keep current with what is happening at the Elks, including Facebook, phone blast, and newsletter by e-mail. If you are not receiving either the phone blast or newsletter, please notify Paula Garcia at 574-302-7698 or [paula@psgarcia.com](mailto:paula@psgarcia.com)

## Upcoming Events

**October 15<sup>th</sup>:** Pier Removal

**October 26<sup>th</sup>:** Scare-Up Cash Dinner & Drawing

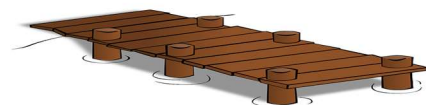
**November 1<sup>st</sup>:** Lodge Closes

**November 9<sup>th</sup>:** Hoop Shoot

## Piers at the Elks

**Piers are scheduled to be removed October 15.**

**Please remove boats and lifts by 10/15. Those who had pier space this season will have first option next season.**



We will be looking for donations for patio furniture next year. Please remember us as you renovate your outdoor furniture and wish to donate to the Elks!



## Hoop Shoot

**November 9<sup>th</sup>, 2019**

**Riddle Elementary**

**9am**

**Have your kids come on out and show off your skills and have some fun!**



## An Update on Sinatra on the Lake

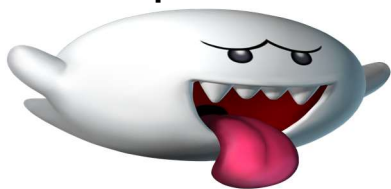
Sinatra on the lake was a success! The room was decorated with twinkling stars on the dance floor and black and white tuxedo inspired decorations on the table. Thanks to Keith Kolb, Jan Sawyer, Linda Hudkins, Maureen Martin, Kathy Politz and Sandy Eck for spending an afternoon chopping and assembling lasagne and sausage and peppers for a crowd. The kitchen crew and bartending staff helped make the night a success. A good time was had by all! My kinda town!

**Suzanne Kolb**

### Dining Room Update

Wednesday night meals ended 9/25.  
Friday night meals will continue through October. We hope to see you and your friends and family enjoying the delicious food.

## Scare-Up Some Cash



\$1300 Drawing

\$100 First Number Drawn

FOUR \$50 Winners

One \$1000 Grand Prize Winner

Donation \$10 a Ticket

Only 350 Tickets Sold! Get them while available!

Dinner is included in the donation.

Dinner is served from 5:30-7:30

Drawing Starts at 6:30



## SCARE-UP SOME CASH



ELKS LODGE #2120 / SATURDAY, OCTOBER 26, 2019

### \$1,300 DRAWING

\$100 - 1st Number Drawn | \$50 - 4 Winners | \$1,000 - Grand Prize

Donation \$10.00 A Ticket - Only 350 Tickets Sold

DINNER INCLUDED

Dinner Served 5:30 to 7:30 - Drawing Starts 6:30 p.m.

## Check this out! October Featured Elks!

### Mark Schoop!

Huge Thank You to this man for all of his hard work throughout the years and especially this year with his window washing!!



As another successful golf season begins to wind down this fall, the course is still open and in great shape. Come out and enjoy some fall golf before the snow and cold.

The Elks Officers and Trustees would like to take this opportunity to thank all those who came out and helped make this 2019 season a great season! Thanks to all of employees, volunteers, and all hard workers who come help clean up after every storm we experienced this early Spring. We have heard many recent compliments on how great the conditions of the course is in. Without all the help of everyone and especially our volunteers we would not be able to have the course we have today.

Looking ahead to next Spring, I would like to plan to have the course clean up completed by April 1<sup>st</sup>, and no this is not an early April Fool's joke.

We will plan, tentatively, March 14<sup>th</sup>, 21<sup>st</sup>, and 28<sup>th</sup>, 2020, weather permitting. We will be working 10am to 12 pm. We are looking forward to a super 2020 golf season.

**Greg Glass**

# October 2019

SUN	MON	TUE	WED	THUR	FRI	SAT
		1  Lodge Open 3 PM-Close	2  Lodge Open 3 PM-Close	3  Lodge Open 3 PM-Close	4 Lodge Open 12PM- Close Dining Room Open 5:30 - 9 PM Texas Hold'em 6 PM	5 Lodge Open 12 PM-Close
6 Lodge Open 12 PM- Close Monthly 50/50 Drawing	7  Lodge Closed Trustee/ Officer Meeting 6PM	8  Lodge Open 3 PM-Close	9  Lodge Open 3 PM-Close	10  Lodge Open 3 PM-Close	11 Lodge Open 12PM- Close Dining Room Open 5:30 - 9 PM Texas Hold'em 6 PM	12 Lodge Open 12 PM-Close
13  Lodge Open 12 PM- Close 	14  Lodge Closed	15 <b>PIERS OUT!</b> Lodge Open 3 PM-Close Dining Room Open 6 - 9 PM <b>Surprise Meal</b>	16  Lodge Open 3 PM-Close	17  Lodge Open 3 PM-Close	18 Lodge Open 12 PM -Close Dining Room Open 5:30 - 9 PM Texas Hold'em 6 PM	19  Lodge Open 12 PM-Close
20  Lodge Open 12 PM- Close	21  Lodge Closed Trustee/ Officer Meeting 6PM Lodge Meeting 7PM	22  Lodge Open 3 PM-Close	23  Lodge Open 3 PM-Close	24  Lodge Open 3 PM – Close Monthly Thursday Drawing	25 Lodge Open 12PM- Close Dining Room Open 5:30 - 9 PM Texas Hold'em 6 PM Last Night for Dinner	26  Dining Room Open 5:30-Close Lodge Open 12 PM-Close <b>Scare Up Some Cash</b>
27  Lodge Open 12 PM- Close	28  Lodge Closed	29  Lodge Open 3 PM-Close	30  Lodge Open 3 PM-Close 	31 Last Day Lodge Open 3 PM – Close Happy Halloween!	<u>Telephone Numbers/Web Sites</u> <b>Lodge: 223-3704</b> <b>Pro Shop: 223-4427 (When Open)</b> <b>Elks Website: <a href="http://www.elks2120.com">www.elks2120.com</a></b> <b>Grand Lodge: <a href="http://www.elks.org">www.elks.org</a></b> <b>Indiana Elks: <a href="http://www.indianaelks.org">www.indianaelks.org</a></b>	